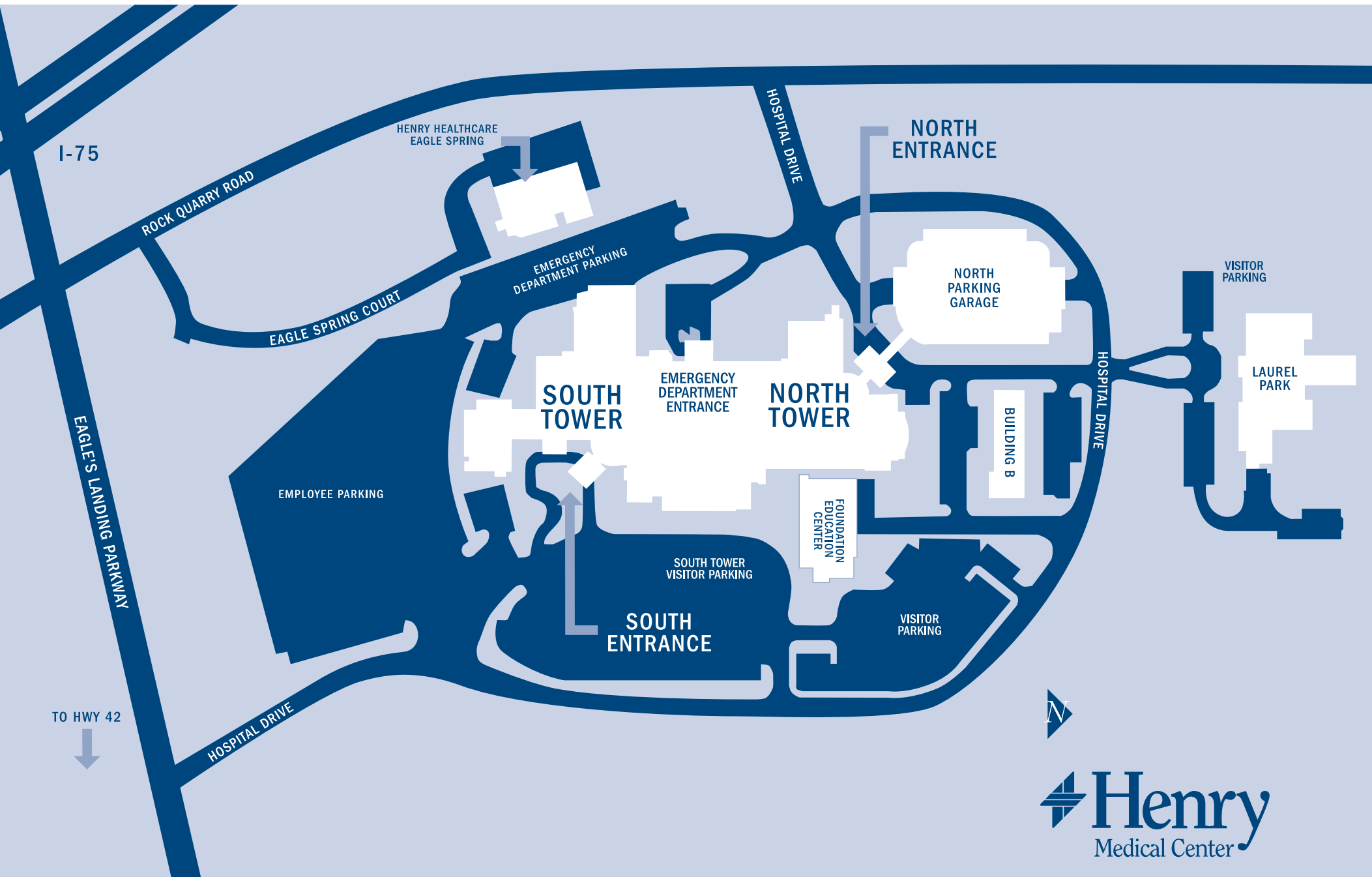
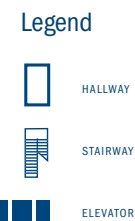
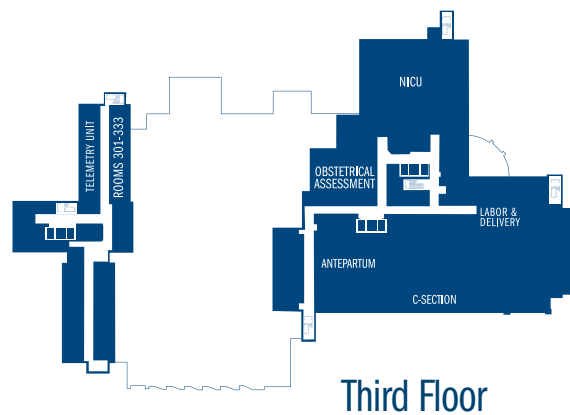
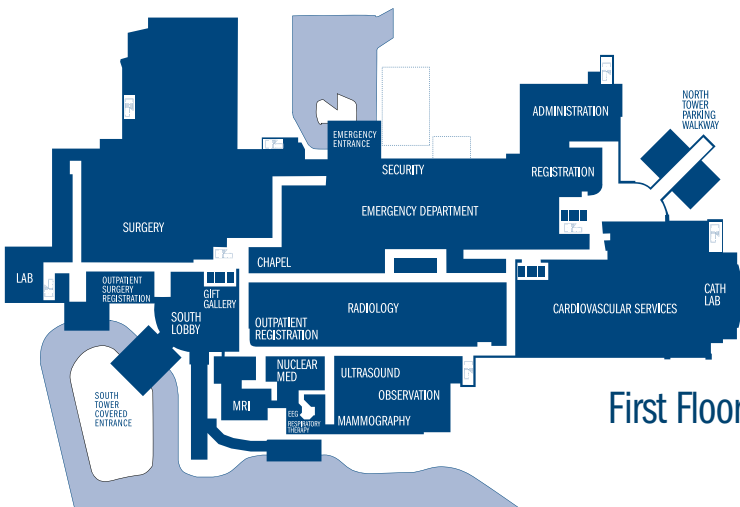
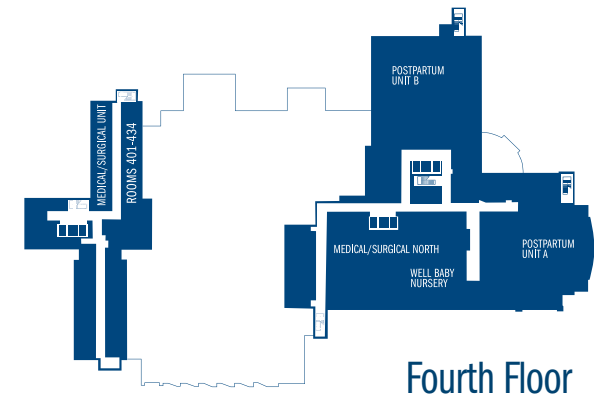
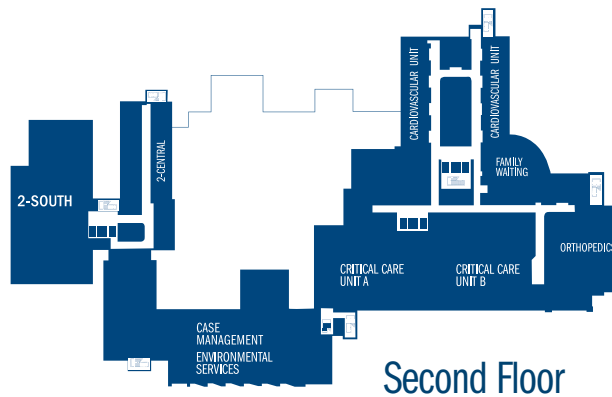
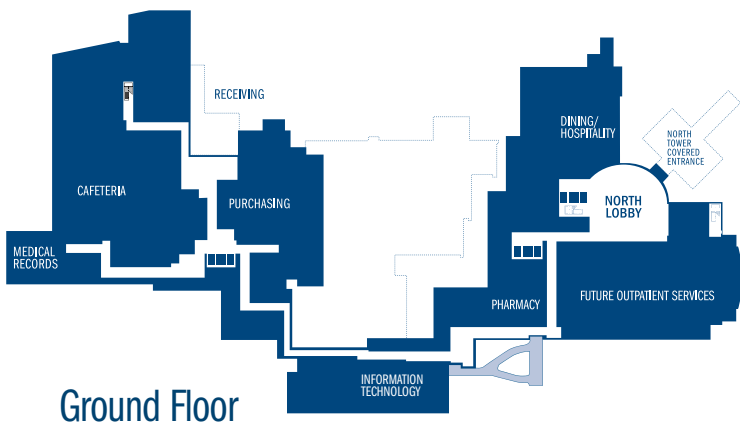


# Henry Medical Center Visitor Guide



Leading Edge Technology. First Class Care. Close To Home.



Department	Location
ADMINISTRATION	NORTH TOWER 1ST FLOOR
CAFETERIA	SOUTH TOWER GROUND
CARDIOVASCULAR SERVICES	NORTH TOWER 1ST FLOOR
CARDIAC CATH LAB	NORTH TOWER 1ST FLOOR
CASE MANAGEMENT	SOUTH TOWER 2ND FLOOR
CHAPEL	SOUTH TOWER 1ST FLOOR
CRITICAL CARE UNIT (CCU)	NORTH TOWER 2ND FLOOR
EDUCATION	EDUCATION CENTER 1ST FLOOR
EEG	SOUTH TOWER 1ST FLOOR
EMERGENCY DEPARTMENT	EMERGENCY ENTRANCE 1ST FLOOR
FOUNDATION	EDUCATION CENTER 1ST FLOOR
GIFT GALLERY	SOUTH TOWER 1ST FLOOR
HUMAN RESOURCES	EDUCATION CENTER GROUND
LABOR & DELIVERY	NORTH TOWER 3RD FLOOR
LABORATORY	SOUTH TOWER 1ST FLOOR
MAMMOGRAPHY	SOUTH TOWER 1ST FLOOR

MEDICAL CARDIOLOGY UNIT	NORTH TOWER 2ND FLOOR
MEDICAL RECORDS	SOUTH TOWER GROUND
MRI	SOUTH TOWER 1ST FLOOR
NICU	NORTH TOWER 3RD FLOOR
NUCLEAR MEDICINE	SOUTH TOWER 1ST FLOOR
NURSERY	NORTH TOWER 4TH FLOOR
OBSERVATION UNIT	SOUTH TOWER 1ST FLOOR
ORTHOPEDICS	NORTH TOWER 2ND FLOOR
OUTPATIENT REGISTRATION	SOUTH TOWER 1ST FLOOR
OUTPATIENT SURGERY REGISTRATION	SOUTH TOWER 1ST FLOOR
PATIENT ACCOUNTS (BILLING)	EDUCATION CENTER GROUND
REHAB/PHYSICAL THERAPY	HENRY HEALTHCARE EAGLE SPRING
POST PARTUM - WOMEN'S & INFANTS UNIT	NORTH TOWER 4TH FLOOR
RADIOLOGY	SOUTH TOWER 1ST FLOOR
REGISTRATION	NORTH TOWER 1ST FLOOR
RESPIRATORY THERAPY	SOUTH TOWER 1ST FLOOR
SECURITY	EMERGENCY ENTRANCE 1ST FLOOR
SLEEP LAB	HENRY HEALTHCARE EAGLE SPRING
SURGERY	SOUTH TOWER 1ST FLOOR
VASCULAR LAB	SOUTH TOWER 1ST FLOOR
WOUND CLINIC	HENRY HEALTHCARE EAGLE SPRING

Patient Rooms	Location
ROOMS 2201-2232 (CRITICAL CARE)	NORTH TOWER 2ND FLOOR
ROOMS 2241-2256 (ORTHOPEDICS)	NORTH TOWER 2ND FLOOR
ROOMS 2261-2278 (CARDIOVASCULAR UNIT)	NORTH TOWER 2ND FLOOR
ROOMS 301-333 (TELEMETRY UNIT)	SOUTH TOWER 3RD FLOOR
ROOMS 3201-3210 (ANTEPARTUM UNIT)	NORTH TOWER 3RD FLOOR
ROOMS 3241-3252 (LABOR & DELIVERY)	NORTH TOWER 3RD FLOOR
ROOMS 401-434 (MEDICAL/SURGICAL UNIT)	SOUTH TOWER 4TH FLOOR
ROOMS 4201-4212 (MEDICAL/SURGICAL NORTH)	NORTH TOWER 4TH FLOOR
ROOMS 4241-4278 (POST PARTUM)	NORTH TOWER 4TH FLOOR